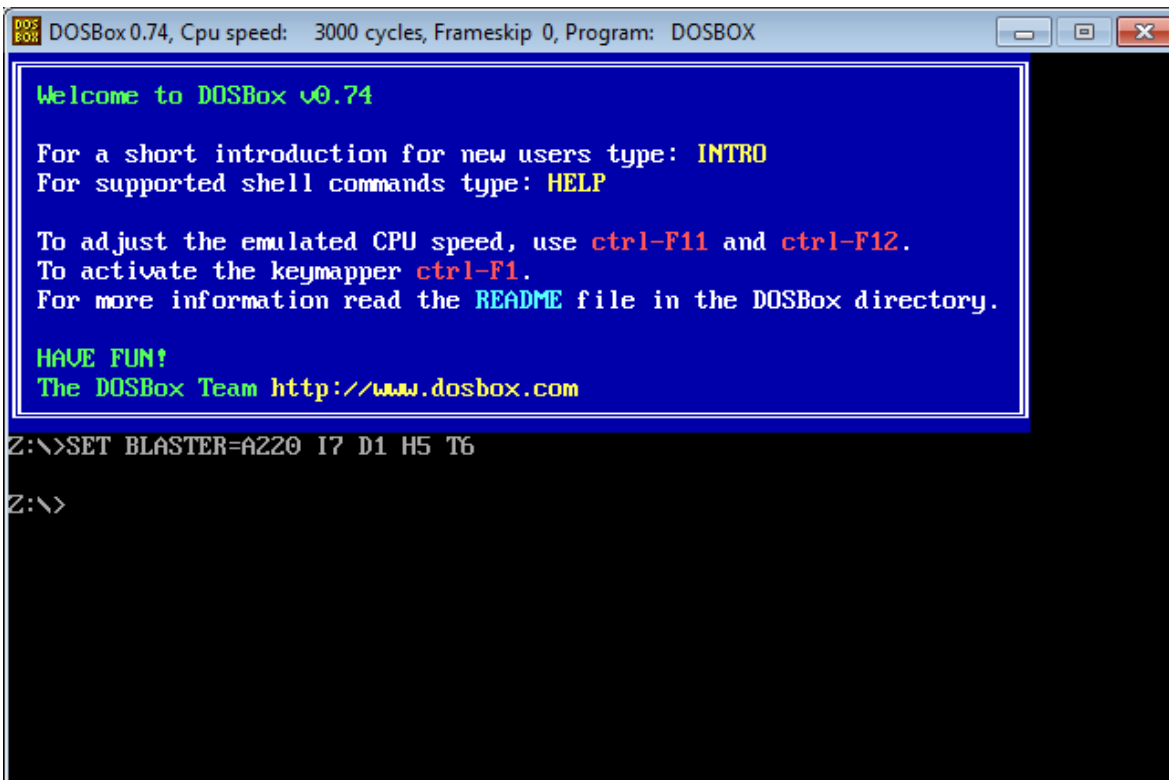


PROCESO PARA EJECUTAR *TURBO C++3.0* (C:\TC\BIN\TC.EXE) BAJO EL EMULADOR DE DOS “*dosbox.exe*”.

Antes de

1. Descargar la aplicación *DOSBox0.74-win32-installer.exe* disponible en el sitio *dosbox.com*.
2. Instalar con las opciones por omisión.
3. Tener instalado con las opciones por omisión *Turbo C++ 3.0*.

1. Al ejecutar DOSbox debe aparecer la siguiente pantalla.



```
DOSBox 0.74, Cpu speed: 3000 cycles, Frameskip 0, Program: DOSBOX

Welcome to DOSBox v0.74

For a short introduction for new users type: INTRO
For supported shell commands type: HELP

To adjust the emulated CPU speed, use ctrl-F11 and ctrl-F12.
To activate the keymapper ctrl-F1.
For more information read the README file in the DOSBox directory.

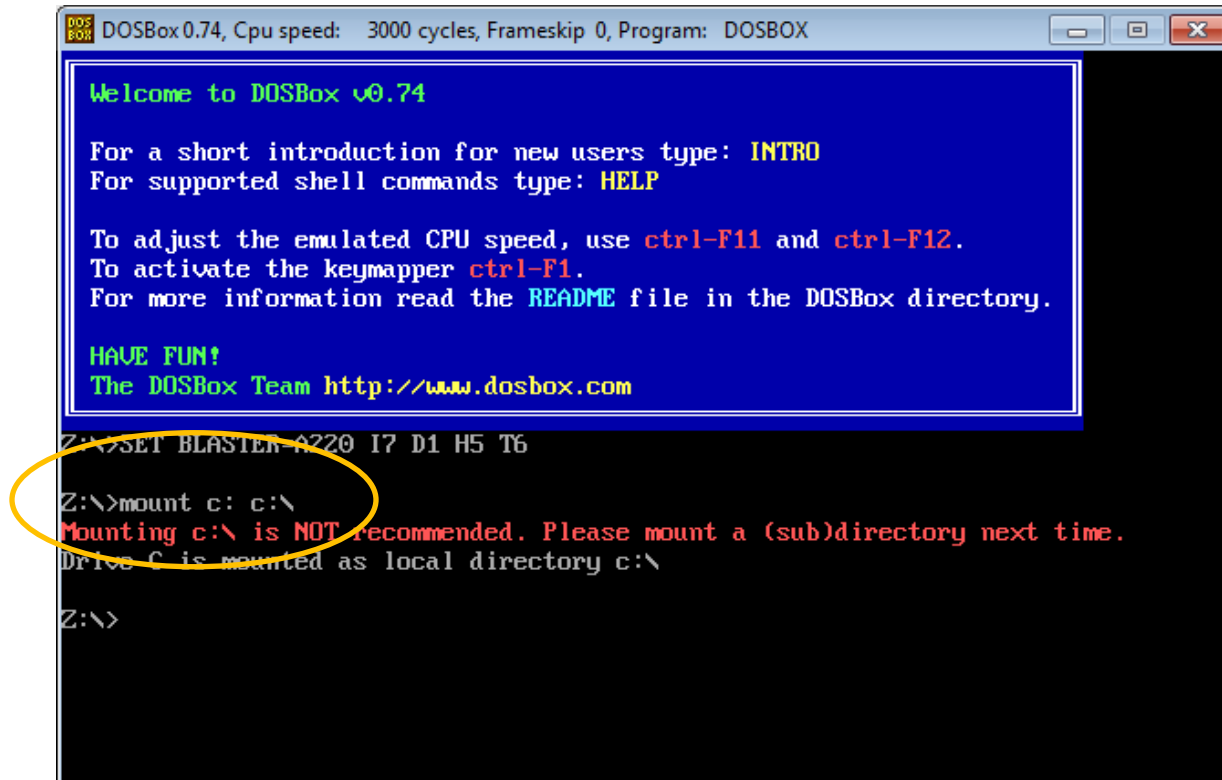
HAVE FUN!
The DOSBox Team http://www.dosbox.com

Z:\>SET BLASTER=A220 I7 D1 H5 T6

Z:\>
```

2. Configurar para que *DOSbox* reconozca la unidad C: donde se encuentra Turbo C a través del comando.

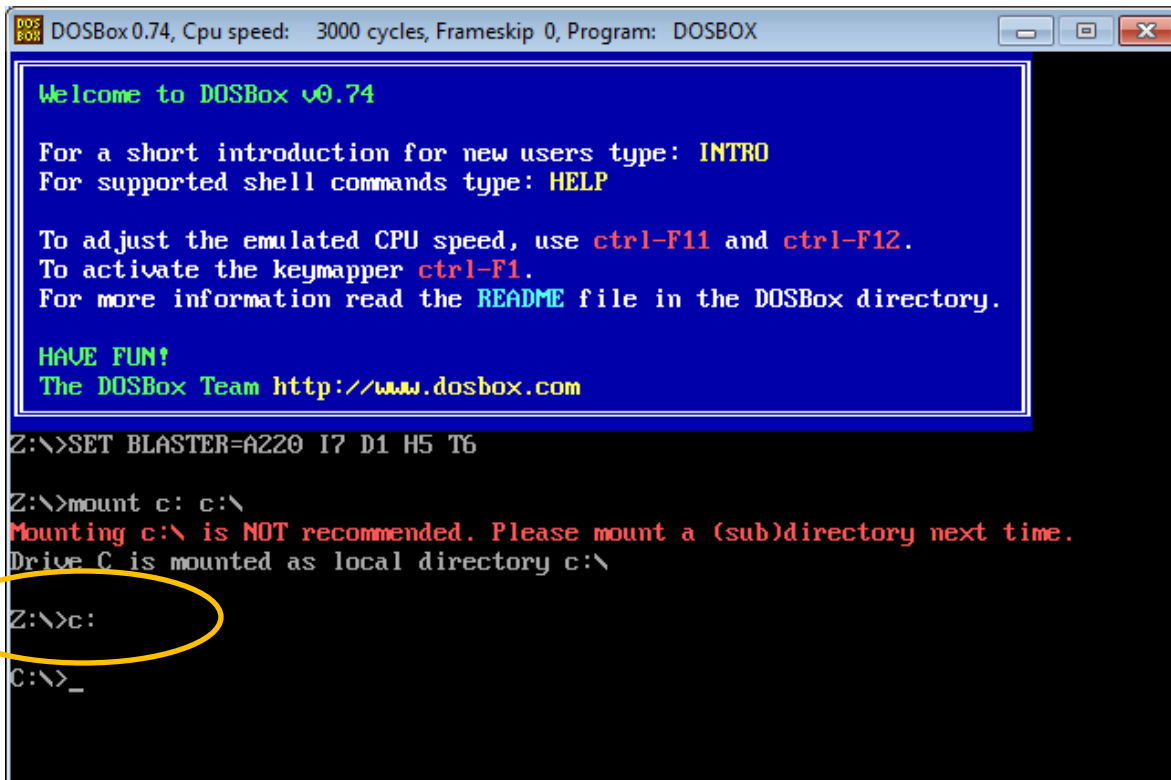
mount c: c:



Ignorar la recomendación, la cual se debe, a que es preferible trabajar con un subdirectorio y no directamente con una unidad.

3. Ir a la unidad C:.

C:



```
DOSBox 0.74, Cpu speed: 3000 cycles, Frameskip 0, Program: DOSBOX

Welcome to DOSBox v0.74

For a short introduction for new users type: INTRO
For supported shell commands type: HELP

To adjust the emulated CPU speed, use ctrl-F11 and ctrl-F12.
To activate the keymapper ctrl-F1.
For more information read the README file in the DOSBox directory.

HAVE FUN!
The DOSBox Team http://www.dosbox.com

Z:\>SET BLASTER=A220 I7 D1 H5 T6

Z:\>mount c: c:\
Mounting c:\ is NOT recommended. Please mount a (sub)directory next time.
Drive C is mounted as local directory c:\

Z:\>c:
C:\>_
```

4. Configurar a teclado en español (opcional).

keyb la

```
DOSBox 0.74, Cpu speed: 3000 cycles, Frameskip 0, Program: DOSBOX

Welcome to DOSBox v0.74

For a short introduction for new users type: INTRO
For supported shell commands type: HELP

To adjust the emulated CPU speed, use ctrl-F11 and ctrl-F12.
To activate the keymapper ctrl-F1.
For more information read the README file in the DOSBox directory.

HAVE FUN!
The DOSBox Team http://www.dosbox.com

Z:\>SET BLASTER=A220 I7 D1 H5 T6

Z:\>mount c: c:\
Mounting c:\ is NOT recommended. Please mount a (sub)directory next time.
Drive C is mounted as local directory c:\

Z:\>c:
C:\>keyb la
Keyboard layout la loaded for codepage 858

C:\>_
```

5. Definir la ruta donde se encuentra *Turbo C++ 3.0*

cd tc\bin

The screenshot shows a DOSBox window with a blue title bar containing the text "DOSBox 0.74, Cpu speed: 3000 cycles, Frameskip 0, Program: DOSBOX". The main window area has a black background with white and colored text. At the top, there is a white box with a blue border containing the following text: "For a short introduction for new users type: **INTRO**
For supported shell commands type: **HELP**

To adjust the emulated CPU speed, use **ctrl-F11** and **ctrl-F12**.
To activate the keymapper **ctrl-F1**.
For more information read the **README** file in the DOSBox directory.

HAVE FUN!
The DOSBox Team <http://www.dosbox.com>

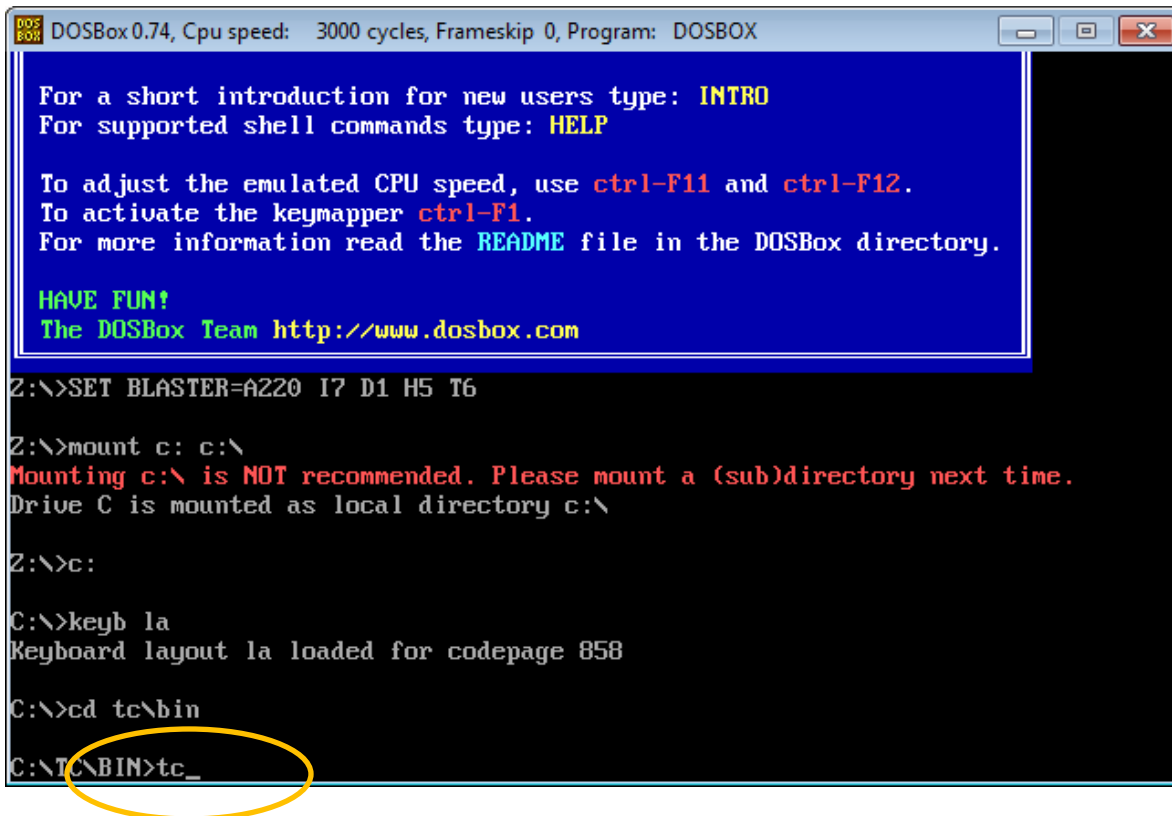
Below this box, the terminal shows the following commands and output:

```
Z:\>SET BLASTER=A220 I7 D1 H5 T6
Z:\>mount c: c:\
Mounting c:\ is NOT recommended. Please mount a (sub)directory next time.
Drive C is mounted as local directory c:\
Z:\>c:
C:\>keyb la
Keyboard layout la loaded for codepage 858
C:\>cd tc\bin
C:\TC\BIN>_
```

The command `C:\>cd tc\bin` is circled in yellow in the original image.

6. Ejecutar *Turbo C++ 3.0*

tc

A screenshot of a DOSBox 0.74 terminal window. The window title bar reads 'DOSBox 0.74, Cpu speed: 3000 cycles, Frameskip 0, Program: DOSBOX'. The terminal output shows a welcome message with instructions on how to use DOSBox, including shortcuts for CPU speed (ctrl-F11, ctrl-F12), keymapper (ctrl-F1), and a README file. Below the welcome message, the user enters several commands: 'SET BLASTER=A220 I7 D1 H5 T6', 'mount c: c:\', 'c:', 'keyb la', and 'cd tc\bin'. The final command 'tc_' is highlighted with a yellow oval.

```
DOSBox 0.74, Cpu speed: 3000 cycles, Frameskip 0, Program: DOSBOX

For a short introduction for new users type: INTRO
For supported shell commands type: HELP

To adjust the emulated CPU speed, use ctrl-F11 and ctrl-F12.
To activate the keymapper ctrl-F1.
For more information read the README file in the DOSBox directory.

HAVE FUN!
The DOSBox Team http://www.dosbox.com

Z:\>SET BLASTER=A220 I7 D1 H5 T6

Z:\>mount c: c:\
Mounting c:\ is NOT recommended. Please mount a (sub)directory next time.
Drive C is mounted as local directory c:\

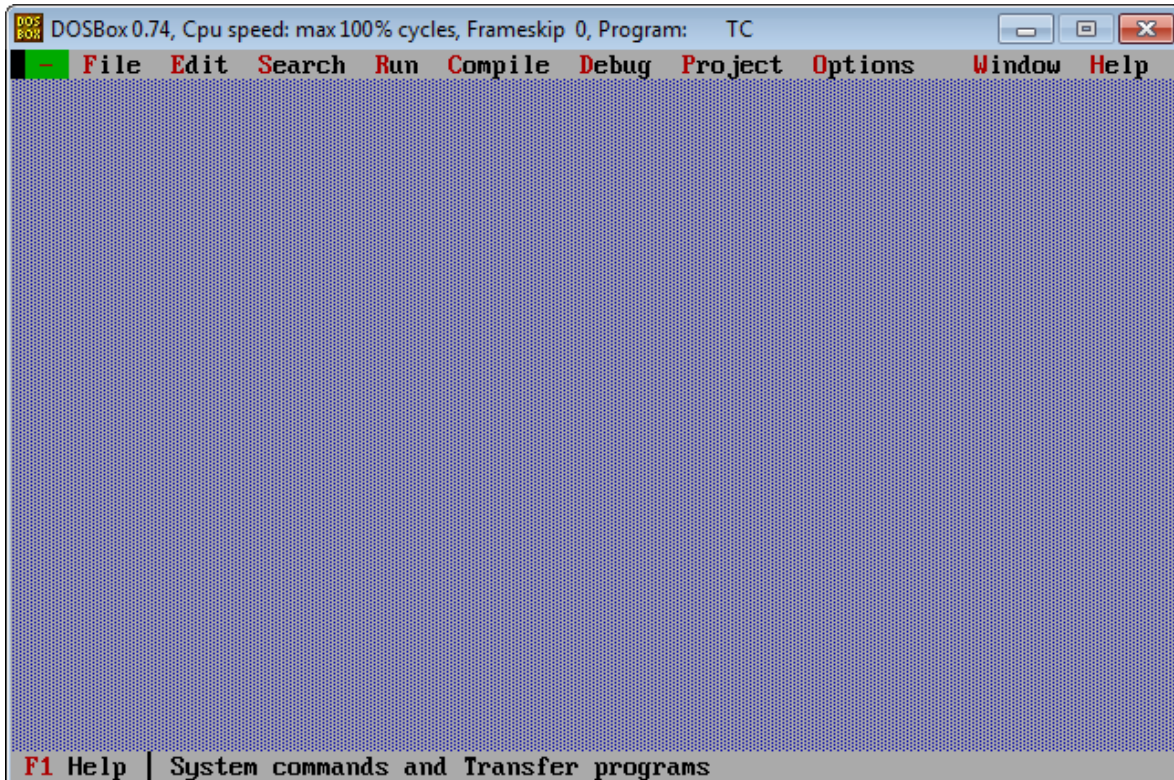
Z:\>c:

C:\>keyb la
Keyboard layout la loaded for codepage 858

C:\>cd tc\bin

C:\TC\BIN>tc_
```

6. Si todo está bien debe aparecer esta pantalla y ya se puede trabajar.

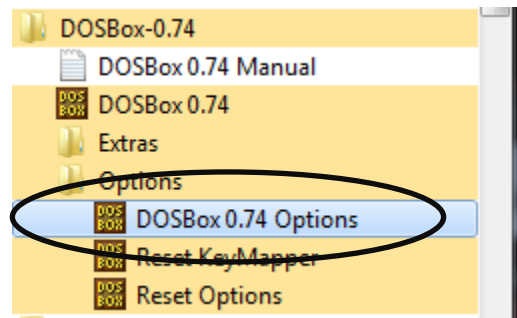


PROCESO PARA EJECUTAR DIRECTAMENTE A TRAVÉS DEL CONFIGURADOR DE *DOSbox*

1. Activar la carpeta de aplicaciones de *DOSbox* en la opción “todos los programas” de Windows.



2. Seleccionar “DOSBox 0.74 Options”.



3. Modificar la opción *fullscreen=false* a *fullscreen=true*, es posible que el equipo no acepte la pantalla completa para DOS esto se nota porque la pantalla queda congelada cuando se accede a *DOSbox*. Cuando esto suceda configurar nuevamente *fullscreen=false*.

```
#          priority: Prio
#          paus
#          Possib
#          mapperfile: File u
#          usescancodes: Avoid

fullscreen=true
fulldouble=false
fullresolution=original
windowresolution=original
output=surface
```


4. Definir al final del archivo de configuración los comandos para ejecutar directamente.

```
ipx=false  
[autoexec]  
# Lines in this section will be run at startup.  
# You can put your MOUNT lines here.  
mount c: c:\  
c:  
keyb la  
cd tc\bin  
tc
```

5. !!! Listo !!! Al hacer *click* sobre el ícono de *DOSbox* debe aparecer la pantalla de Turbo C.

